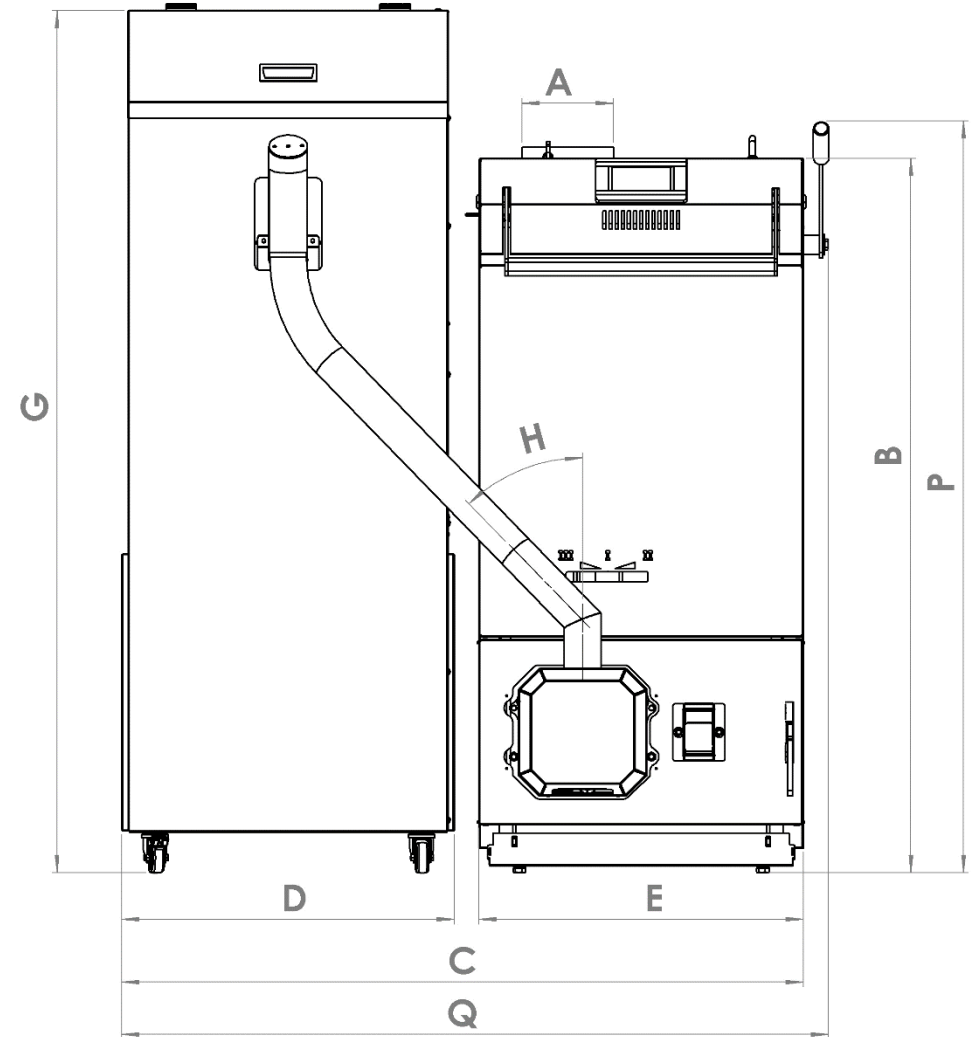
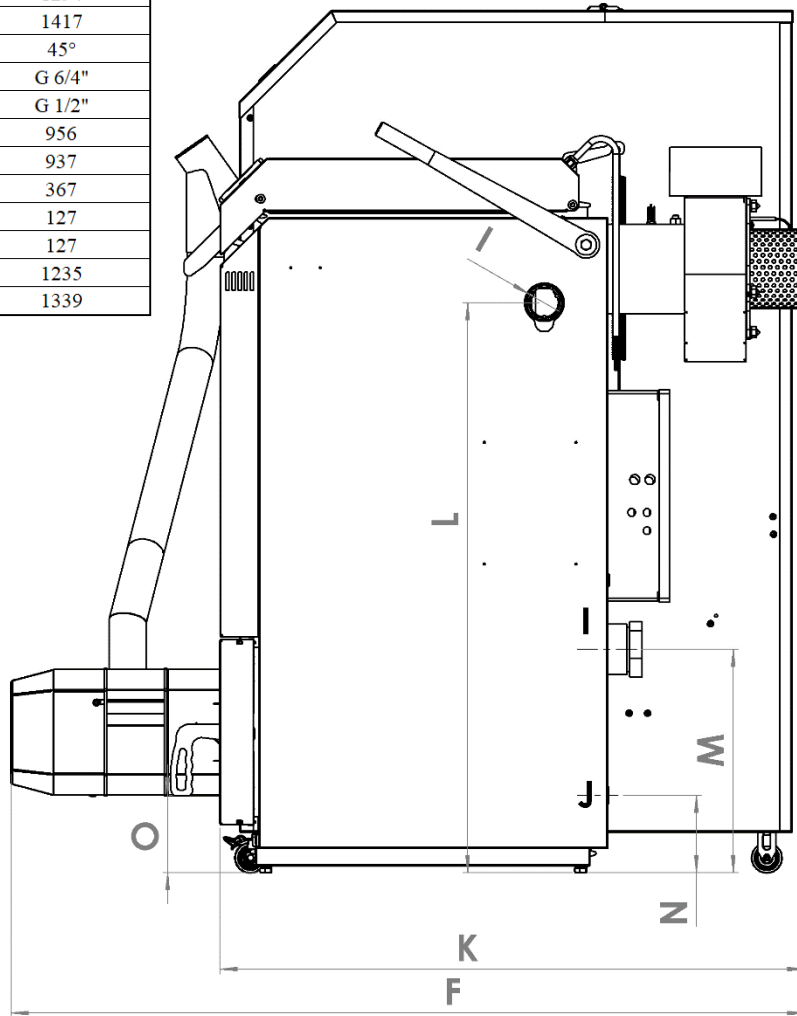
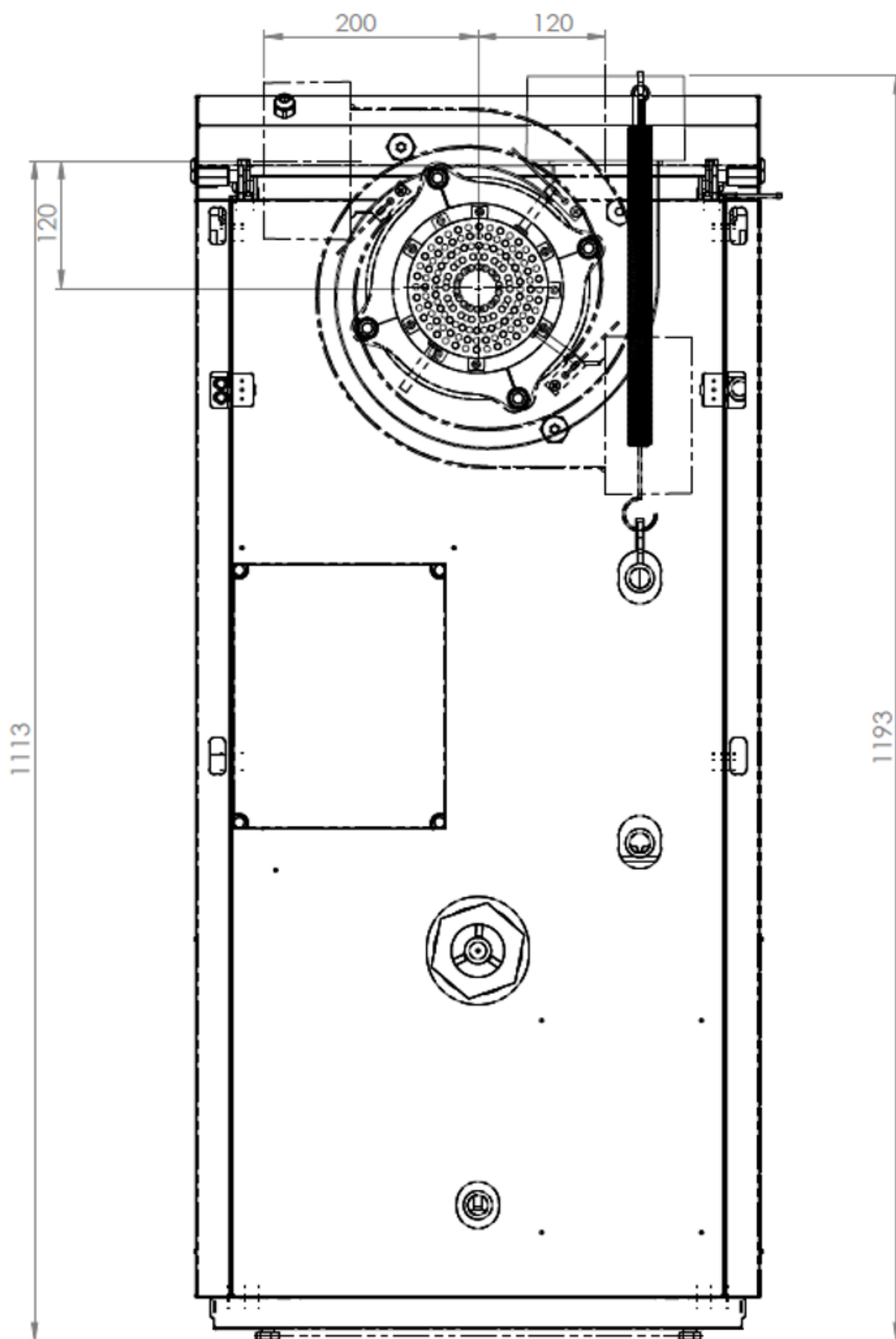


TECHNICAL SHEET: BLAZE COMFORT COMBI

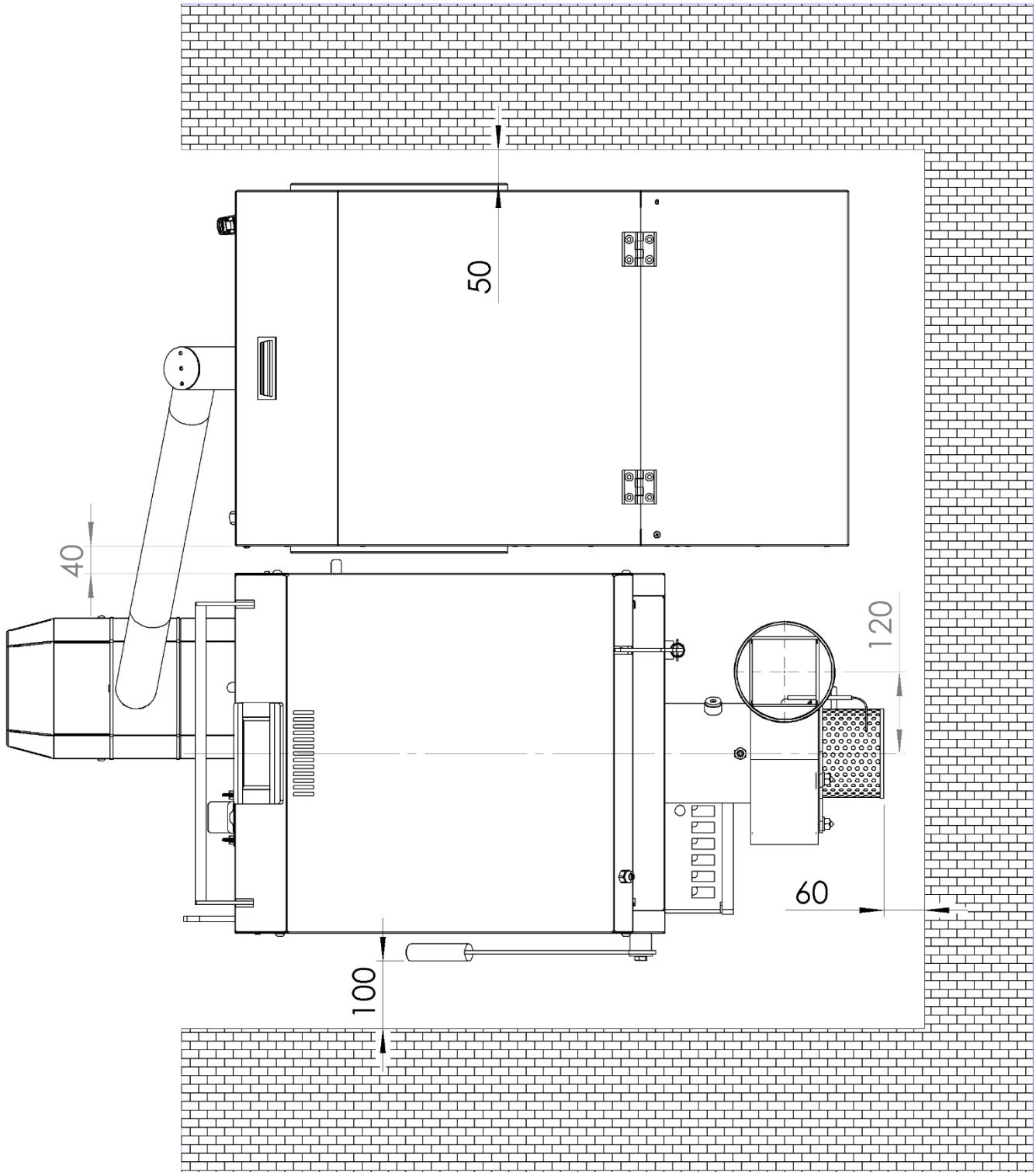
Boiler type		BC15	BC20	BC25	BC30
Nominal output wood / pellets	kW	15/15	20/20	25/20	30/20
Energy efficiency class		A+	A+	A+	A+
Output modulation WOOD	kW	7,5 – 15	10 – 20	12,5 – 25	15 – 30
Output modulation PELLET	kW	4,1 – 15	5,8 – 20	5,8 – 20	5,8 – 20
Fuel consumption at nominal output					
- woods	kg h ⁻¹	4,2	5,6	7	8,4
- pellets	kg h ⁻¹	3	4,5	4,5	4,5
Burning time of full fuel batch at nominal output					
- soft wood	h	4	3	4	3
- hard wood	h	5 - 6	4 – 5	5 – 6	4 - 5
Boiler class according to EN 303-5		5			
Ekodesign		yes			
Efficiency wood/pellets - Nominal output	%	92/94	92/94	94/94	94/94
Seasonal space heating energy efficiency-woods / pellet	%	79/80	80/81	80/81	81/81
Power input at nominal output					
- woods	W	29	33	37	40
- pellets	W	61	63	65	67
Maximum power input	W	190	190	230	230
Power input in stand-by	W	2	2	2	2
Required volume of the buffer tank	dm ³	700-1500	700-1500	1500-3000	1500-3000
Maximum heat loss of the heated building, where the boiler is the only heat source	kW	15	20	25	35
Minimal chimney draught	mbar	0,10			
Maximal chimney draught	mbar	0,40			
CO ₂ content nominal output wood/pellets	CO ₂ %	10,30/11,95	11,06/12,59	11,82/12,59	12,59/12,59
CO ₂ content minimal output wood/pellets	CO ₂ %	7,25/8,11	9,03/8,6	10,81/8,6	12,60/8,6
Flue gas temperature:					
- at nominal output wood/pellets	°C	104/70*	110*	90*	95/81*
- at 50% output	°C	74*	80*	60*	66*
- at minimal output pellets	°C	53	55	56	58
Minimal return water temperature when the integrated thermostat is not installed	°C	50			
Flue gas flow rate at the outlet at nominal output wood/pellets	kg · s ⁻¹	0,01/0,009	0,014/0,01	0,017/0,011	0,02/0,012
Flue gas flow rate at the outlet at minimal output wood/pellets	kg · s ⁻¹	0,008/0,004	0,008/0,004	0,007/0,005	0,007/0,005
Flue gas outlet diameter	mm	150			
Stoking chamber volume	dm ³	80	80	120	120
Boiler dimensions: width x depth x height	mm	530 x 958 x 1200		714 x 958 x 1200	
Dimension of the stoking opening	mm	355 x 355		540 x 355	
Boiler connections: - heating water	Js	G 6/4"			
- return water	Js	G 6/4"			
Voltage		1 PEN 230V / 0,5A / ~ 50 Hz			
Ambience		basic AA5 / AB5			
Electrical protection		IP 20			
Maximum operation pressure	bar	3,0			
Testing pressure	bar	6,0			
Operation boiler temp.range	°C	70 - 95			
Minimal return water temperature	°C	20			
Maximal boiler operation temperature	°C	95			
Boiler hydraulic loss at Δ T = 20 K	mbar	0,2	0,3	0,5	0,8
Maximum noise level	dB	55			
Exchanger volume	dm ³	40	40	55	55
Weight	kg	330	330	440	440

	BCC15/20	BCC25/30
	dimension(mm)	dimension(mm)
A	Ø149	Ø149
B	1193	1193
C	1104	1288
D	544	544
E	530	714
F	1294	1294
G	1417	1417
H	45°	45°
I	G 6/4"	G 6/4"
J	G 1/2"	G 1/2"
K	956	956
L	937	937
M	367	367
N	127	127
O	127	127
P	1235	1235
Q	1155	1339

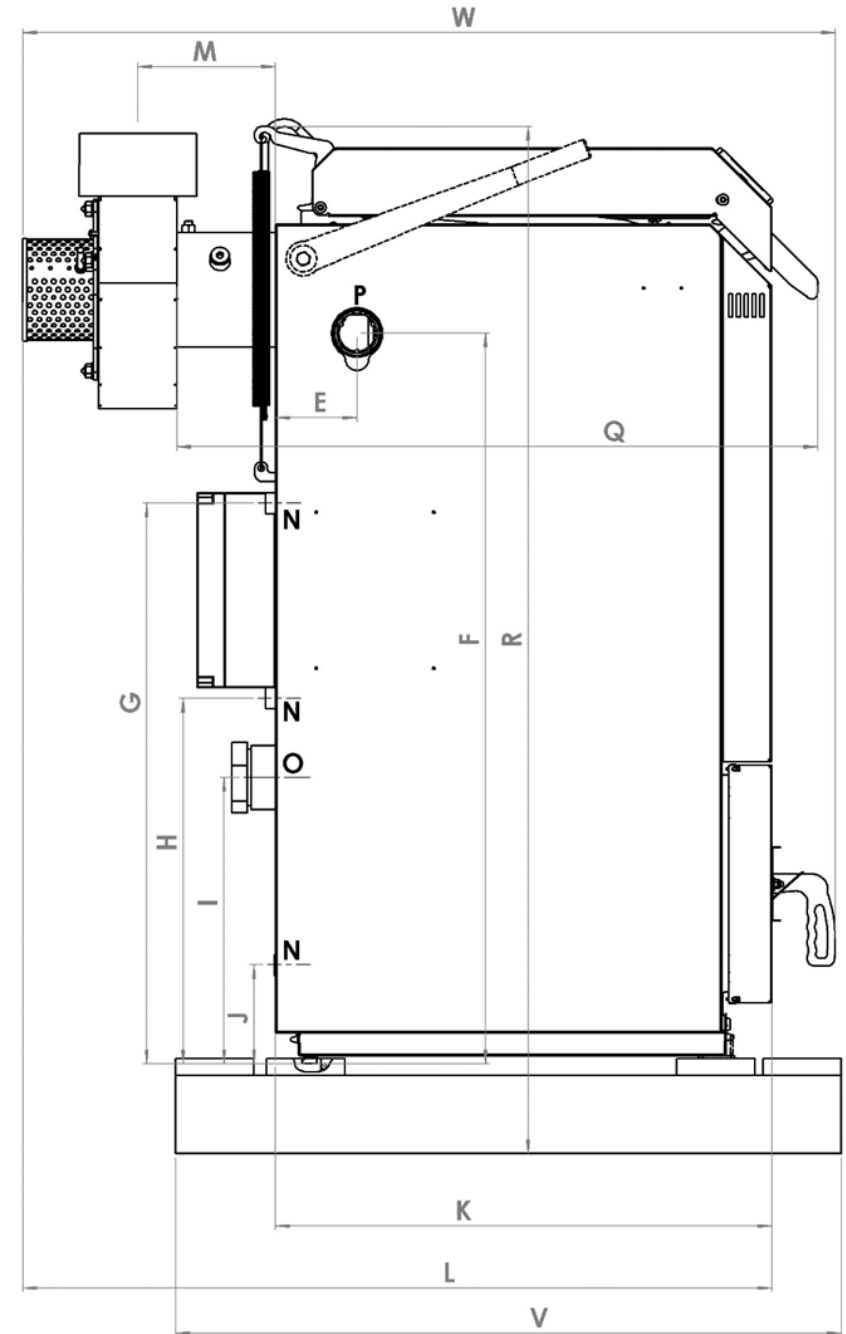
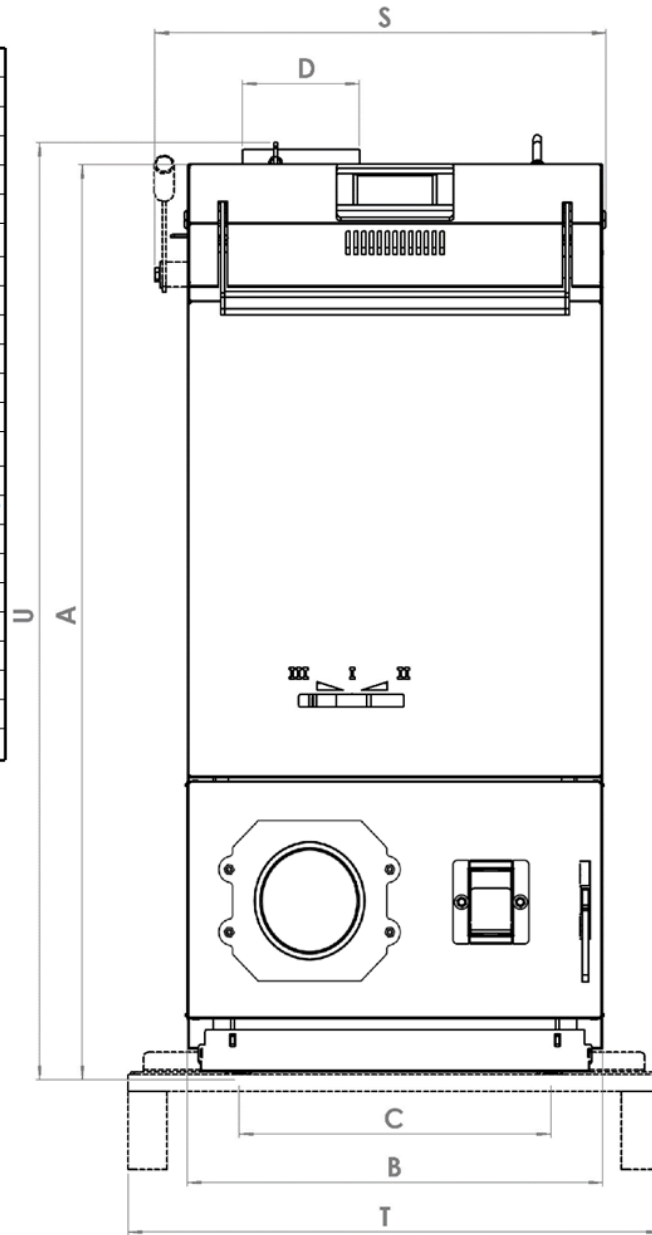




Dimensions and distance from the walls (boiler placement)



	BC15	BC20	BC25	BC30
A	1200	1200	1200	1200
B	530	530	714	714
C	400	400	585	585
D	Ø149	Ø149	Ø149	Ø149
E	104	104	104	104
F	940	940	940	940
G	719	719	719	719
H	469	469	469	469
I	368	368	368	368
J	128	128	128	128
K	634	634	634	634
L	955	955	955	955
M	176	176	176	176
N	G1/2"	G1/2"	G1/2"	G1/2"
O	G2 1/2"*	G2 1/2"*	G2 1/2"*	G2 1/2"*
P	G 6/4"	G 6/4"	G 6/4"	G 6/4"
Q	818	818	818	818
R	1317	1317	1317	1317
S	576	576	760	760
T	684	684	868	868
U	1202	1202	1202	1202
V	850**	850**	850**	850**
W	1038	1038	1038	1038



*Cold water inlet reclaimed to 6/4"

**Maximum transport dimensio